

Monitoring Missouri's Concealed Carry Legislation with the St. Louis County PD's Integrated Database

Robert Fornango
Richard Rosenfeld
Karin Tusinski

University of Missouri-St. Louis
Project on Improving Crime Data
Supported by the National Institute of Justice

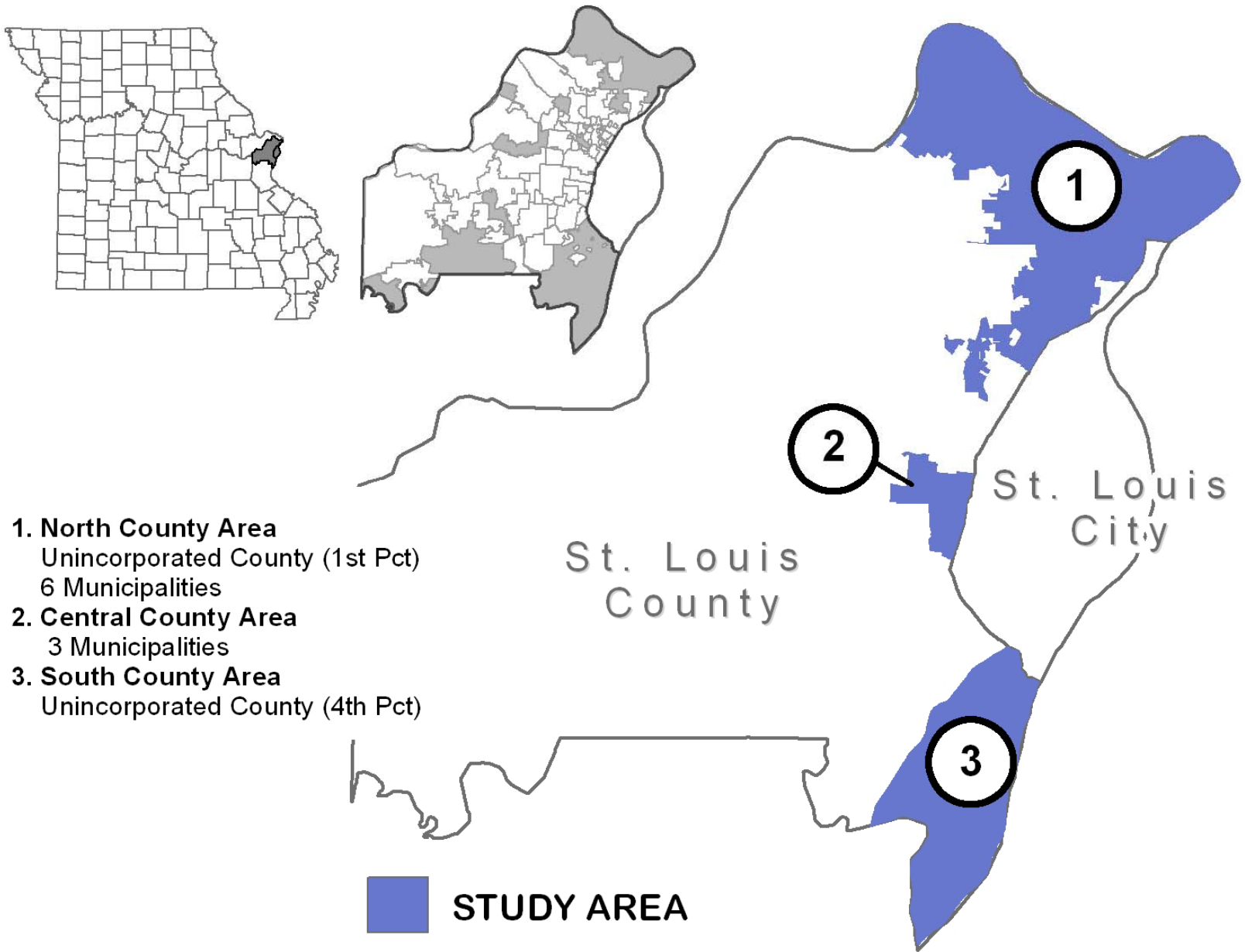
Presentation at the *Seventh Annual International Crime Mapping
Research Conference*, Boston, April 2, 2004

Concealed Carry in Missouri

- Summary of the Legislation
- Probable Implementation late spring 2004
- Restrictions on carrying firearms in public buildings and private establishments
- Lack of restrictions on carrying firearms in motor vehicles
- Resulting concern about thefts of firearms from vehicles

Evaluating Firearm Thefts

- The St. Louis County PD-REJIS Integrated Database
- Monitoring thefts in three areas of St. Louis County
- Data on vehicle thefts, thefts of firearms from vehicles in public parking areas
- Baseline data from 2000



Area	% Black	Disadvantage*	Retail Density**
North 1	71.32	-0.53767	23
North 2	78.58	1.48866	8
North 3	85.54	1.26394	13
North 4	66.68	1.57907	7
North 5	44.41	0.14409	5
Area Average	69.31	0.78762	11.20
Central 6	7.77	-0.70783	27
Central 7	15.93	-0.07242	12
Central 8	13.32	-0.83836	10
Area Average	12.34	-0.53954	16.33
South 9	1.02	-0.31763	7
South 10	1.75	-0.81476	5
South 11	0.24	0.24	0.24
Area Average	1.00	-0.2975	4.08
Total Average	35.14	0.12974	10.66

* Factor score based on index of Poverty Rate, Percent Female Headed Households, and Unemployment Rate

** Number of retail establishments per 1,000 population

**Table 2. Vehicle Theft, Larceny, and Firearms Theft by Area,
January 2000 - March, 2004**

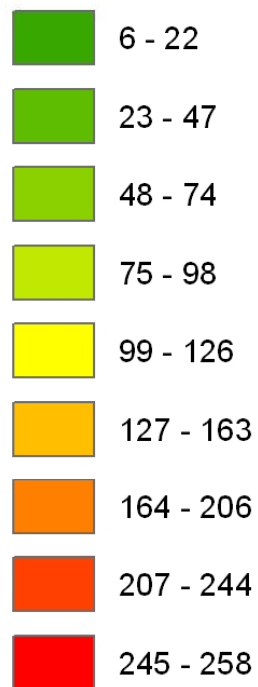
	<u>North</u>	<u>%</u>	<u>Central</u>	<u>%</u>	<u>South</u>	<u>%</u>
Vehicle Theft	4663		601		957	
Larceny	20276		5179		10112	
Items Stolen	30055		7551		14574	
Firearms	156	0.5%	26	0.3%	38	0.3%
Other	29899	99.5%	7525	99.7%	14536	99.7%
Firearm Theft From						
Autos	30	19%	5	19%	10	26%
Non-Autos	126	81%	21	81%	28	74%
Firearm Theft From Autos						
Private	25	83.3%	3	60.0%	3	30.0%
Public Lots	5	16.7%	2	40.0%	7	70.0%
Streets	4	13.3%	1	20.0%	0	0.0%

Larcenies from Autos per sq. mi.

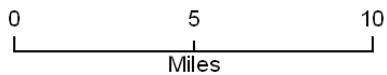
Jan. 2000 - Mar. 2004*

(5356 of 5570 points represented (96%))

Larcenies from Autos per sq. mi.



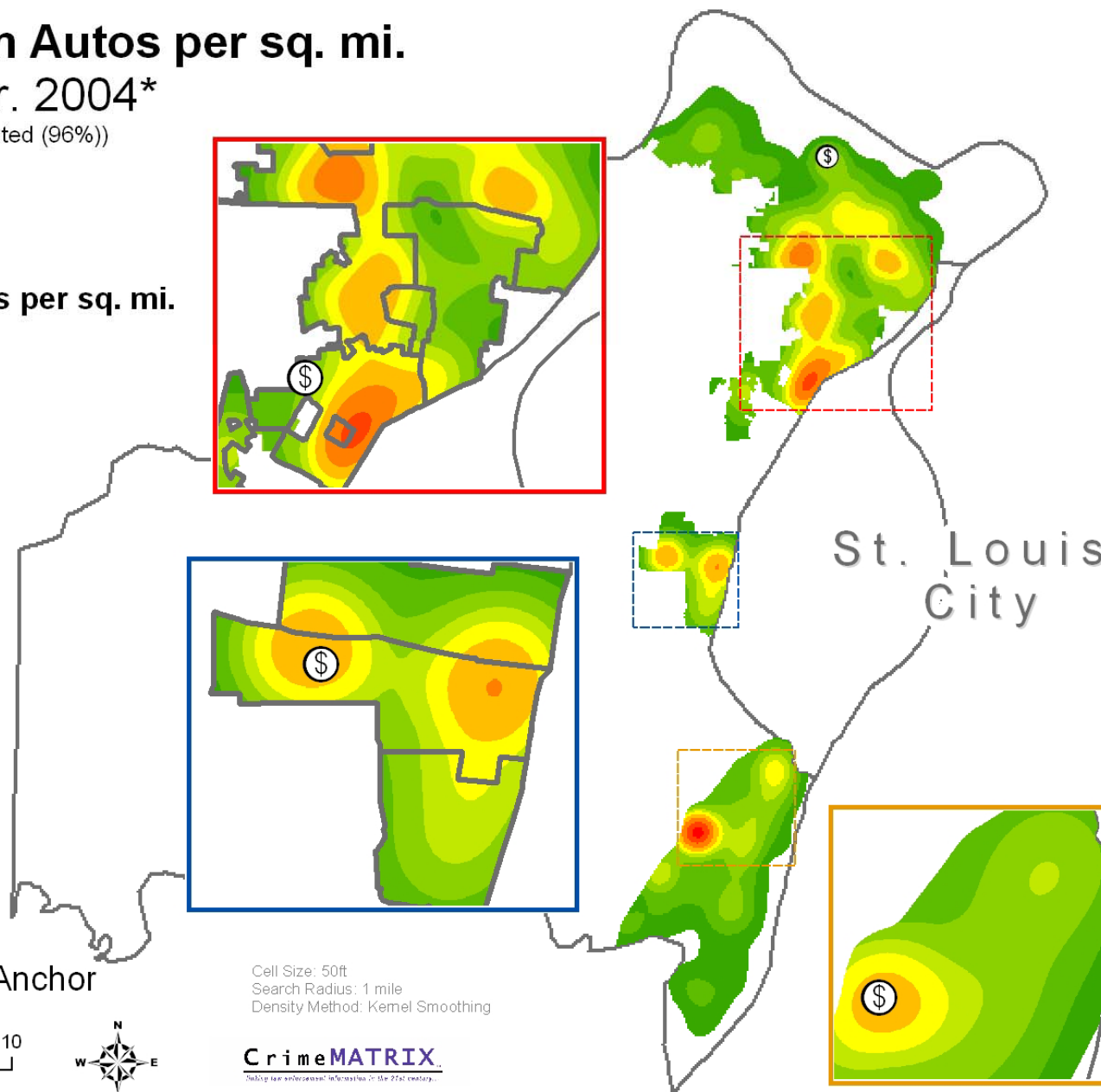
Commercial Anchor



Cell Size: 50ft
Search Radius: 1 mile
Density Method: Kernel Smoothing

CrimeMATRIX

Helping law enforcement re-focus on the 21st century.



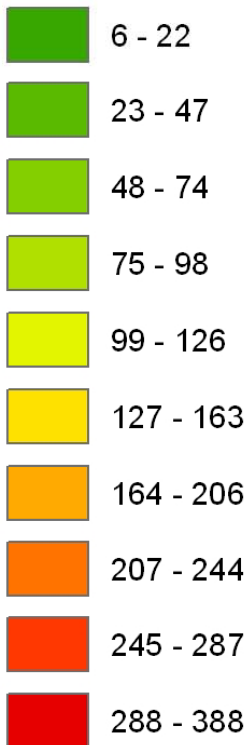
*City of Clayton data starts in JULY '03

Stolen Autos per sq. mi.

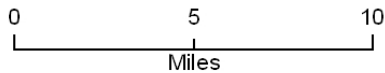
Jan. 2000 - Mar. 2004*

(5883 of 5900 points represented (99.7%))

Stolen Autos per sq. mi.



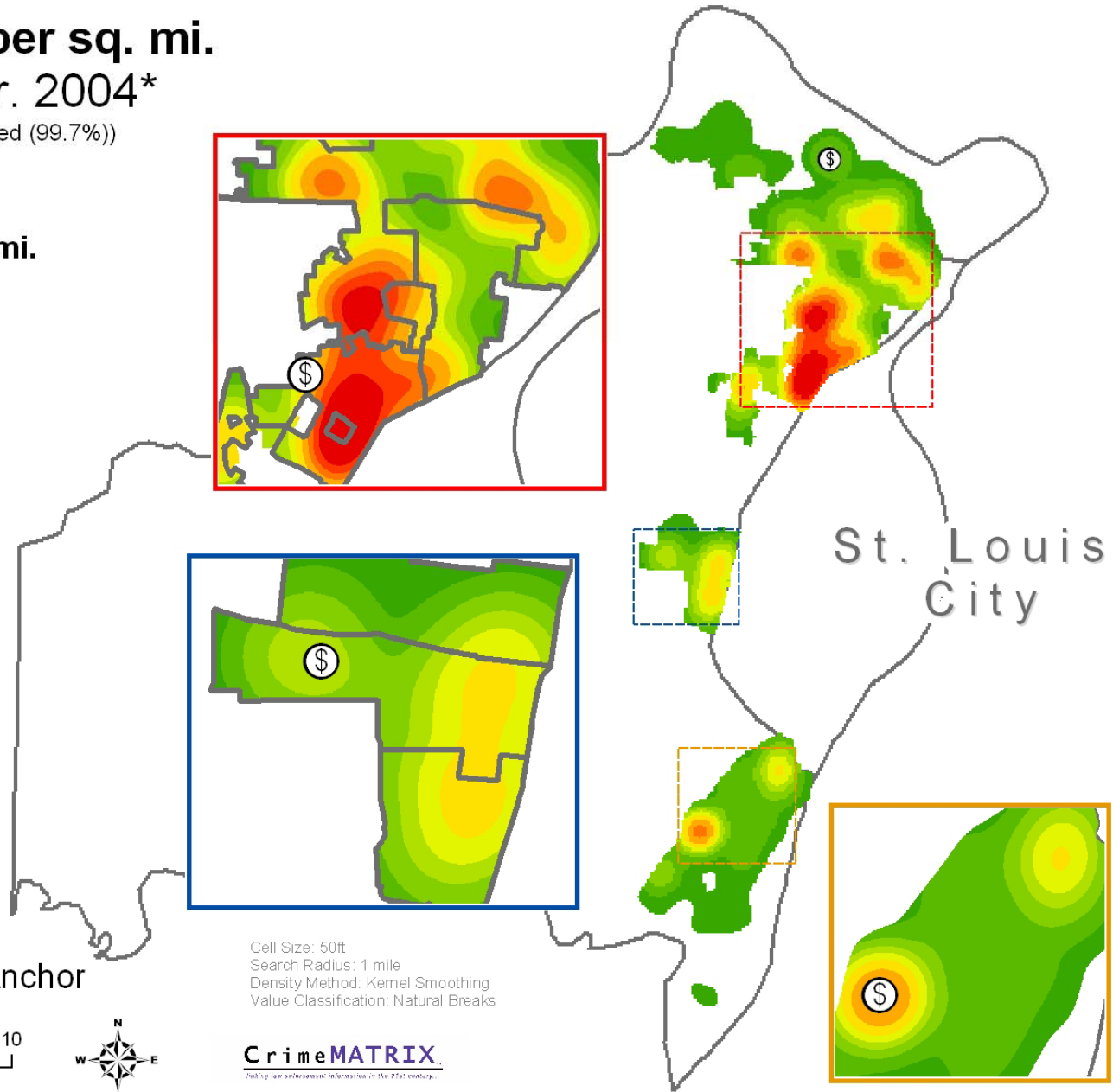
Commercial Anchor



Cell Size: 50ft
Search Radius: 1 mile
Density Method: Kernel Smoothing
Value Classification: Natural Breaks

CrimeMATRIX

Helping law enforcement & researchers in the 21st century.



*City of Clayton data starts in JULY '03

Crimes with Property Type of "GUN"

Stolen Autos or Larcenies from Autos
where Property Type included "GUN"

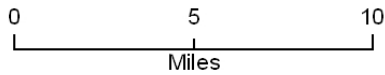
Jan. 2000 - Mar. 2004*

(62 of 63 points represented (99%))

Crimes per sq. mi.



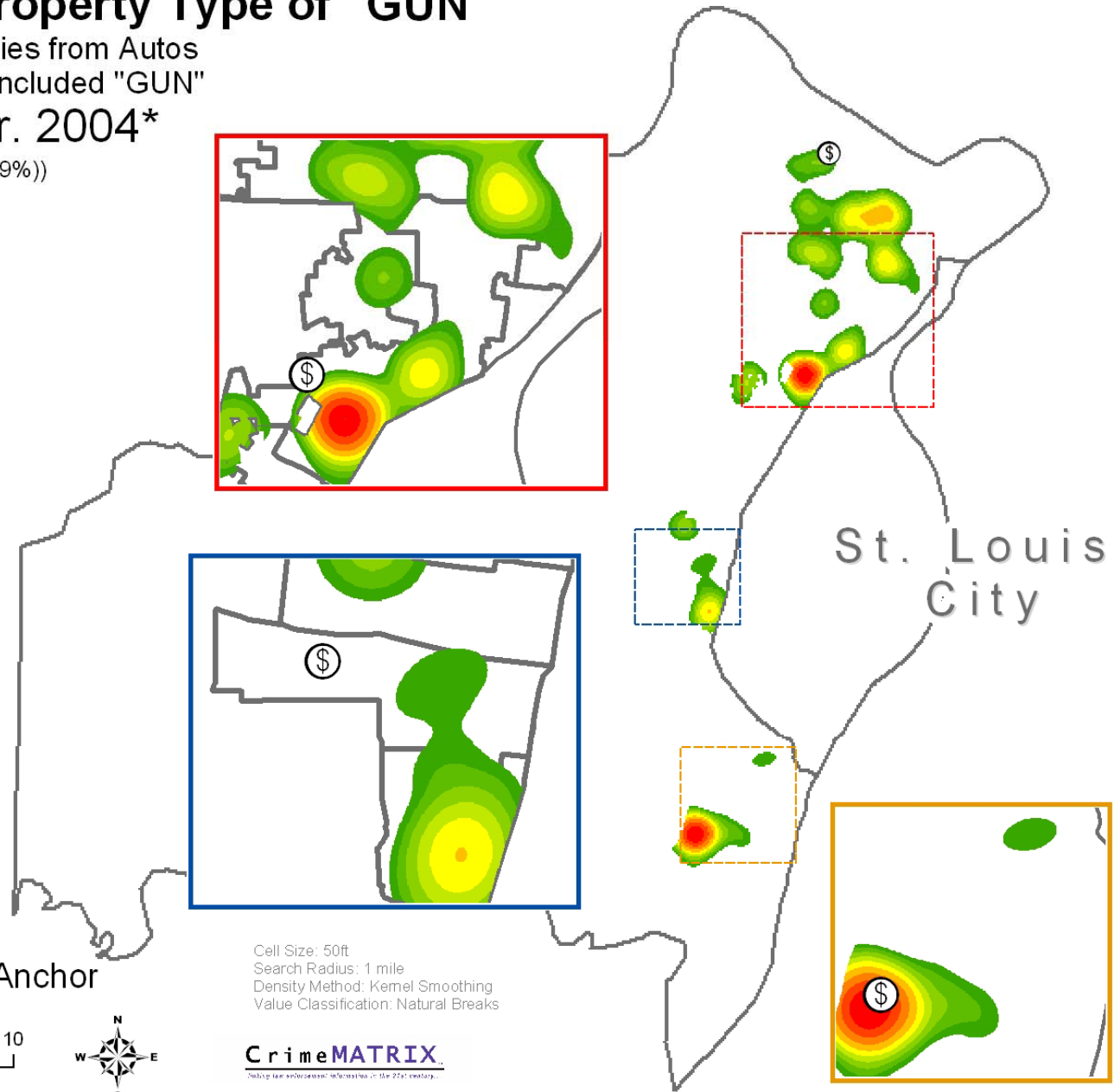
Commercial Anchor



Cell Size: 50ft
Search Radius: 1 mile
Density Method: Kernel Smoothing
Value Classification: Natural Breaks

CrimeMATRIX

Helping law enforcement re-focus resources in the 21st century.



*City of Clayton data starts in JULY '03

Figure 1. Auto Theft by Study Areas, January 2000 - March 2004

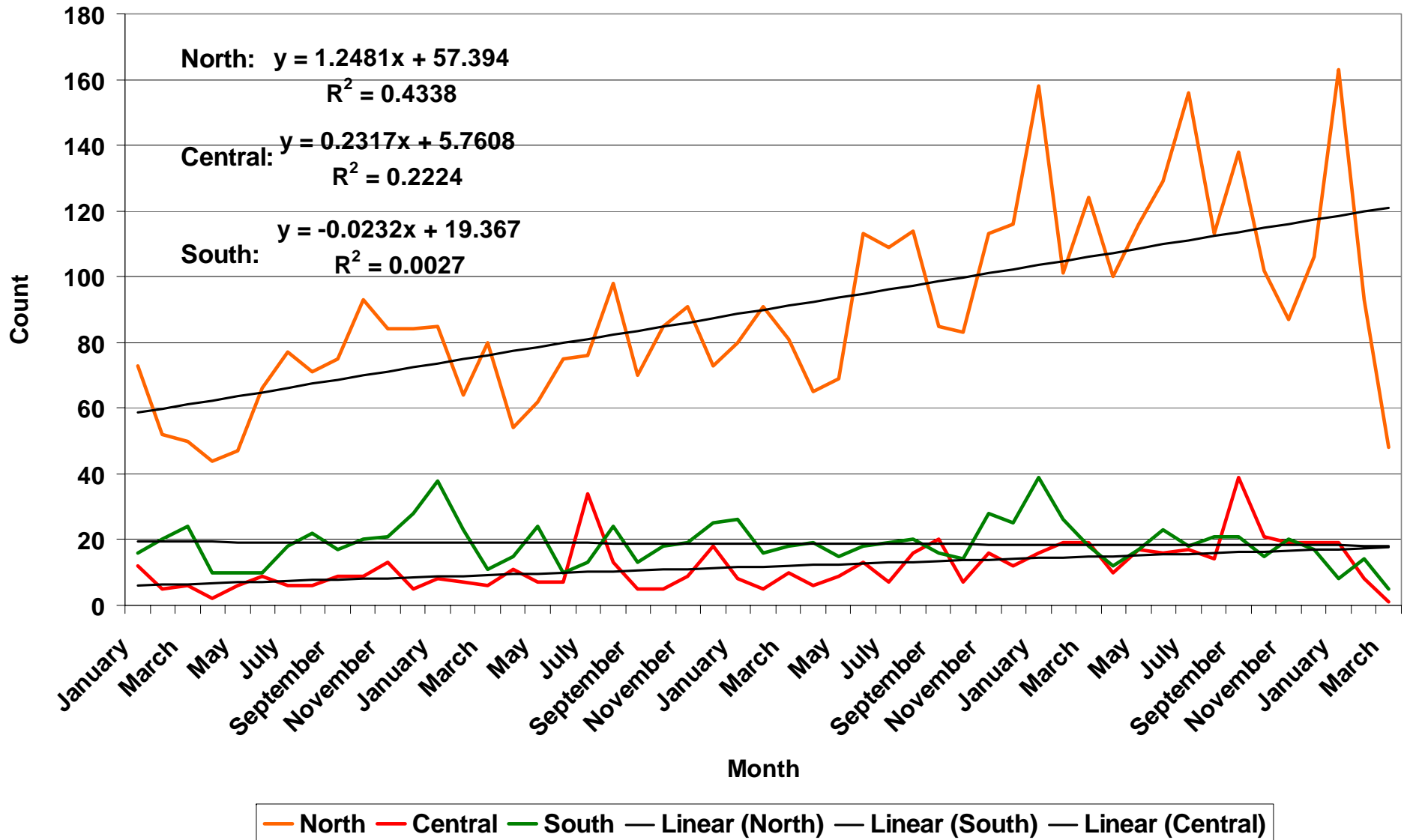
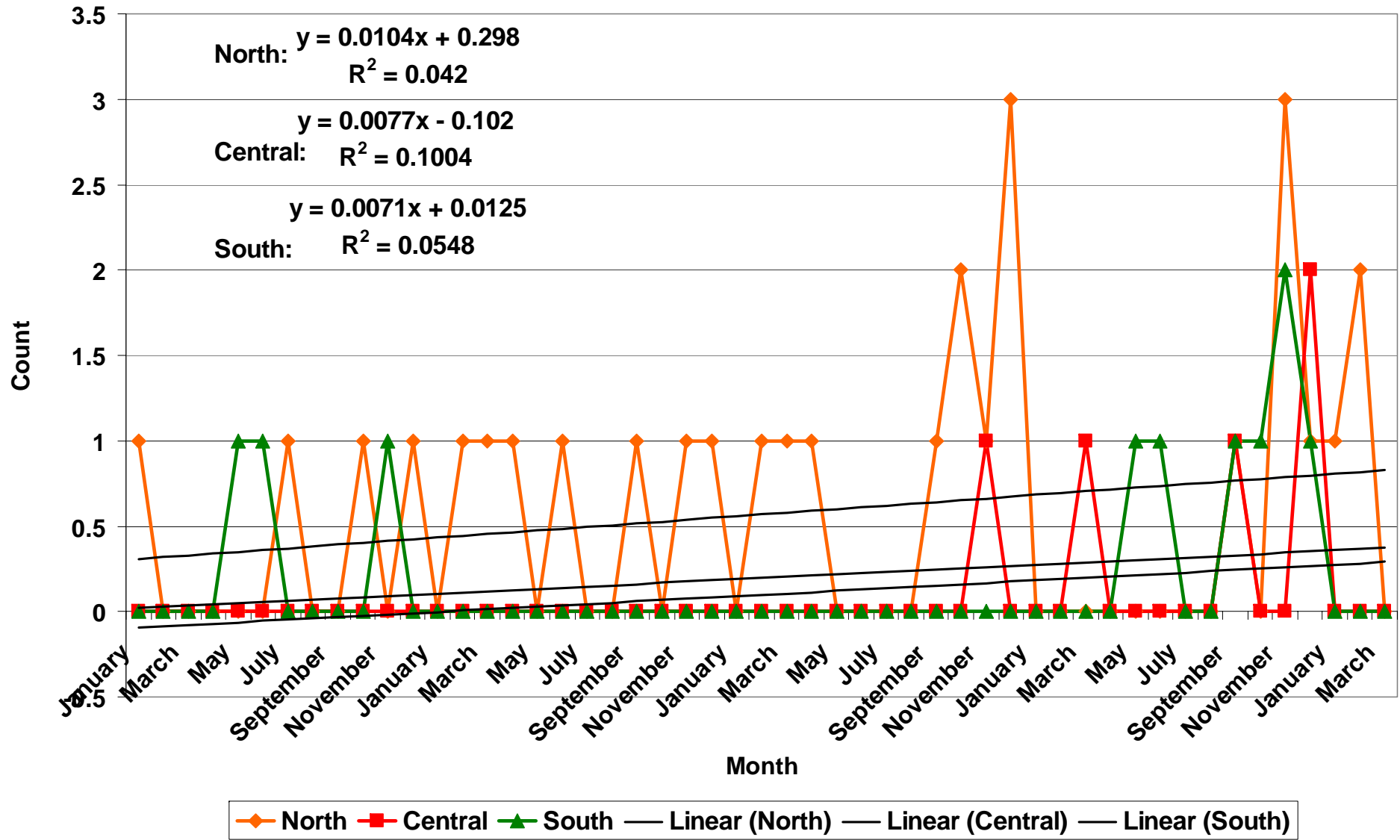


Figure 2. Gun Theft From Autos by Study Areas, January 2000 - March 2004



Concluding Considerations

- The utility of the integrated database for criminal justice policy evaluation
- Augmenting the database with population data (for rates) and area characteristics
- Expanding the system to encompass all jurisdictions